

For more information contact:

Parker Griffin, Chair
Land and Watershed Committee, NLRA
646-660-3104
parkergriffin@mac.com

Martha Twombly, Coordinator
603-744-6332
marthamosaic@gmail.com

Land and Watershed Committee Members
Dick Beyer, Pete Carey, Kate Barrett,
Roger Larochelle, Jon Martin, Mark Coulson,
Vin Broderick, Rosemary D'Arcy, Ken Weidman,
Andy McLane, Dawn Ashley Lemieux, Lori Lerner

Landowner Grants available

Helen Gemmill and her family established the John Gemmill Newfound Fund in 2011 in honor of Helen's father, longtime Director of Camp Pasquaney. This fund is to help landowners pay for transaction costs related to putting their land into conservation, for items such as surveys, appraisals, and stewardship.

Donations can be made to this fund through LRCT, PO Box 766, Center Harbor, NH 03226

NEWFOUND LAND CONSERVATION PARTNERSHIP:

Newfound Lake Region Association

Boyd Smith, Executive Director
www.newfoundlake.org • 603-744-8689

Society for the Protection of New Hampshire Forests

Brian Hotz, Vice-President for Land Conservation
www.forestsociety.org • 603-224-9945

Lakes Region Conservation Trust

Don Berry, President
www.lrct.org • 603-253-3301



Interested in conserving your family lands?

NEWFOUND LAND CONSERVATION PARTNERSHIP



Promoting the conservation of forest lands,
grasslands, wildlife habitats, water resources,
and our rural way of life in
the Newfound Lake region.

THE QUALITY of our lives in the Newfound region is enriched by our beautiful forested mountains and valleys, our wildlife and fisheries, our clean and accessible rivers, ponds and lake, and our village charm. The landscape enhances our small-town atmosphere and our tourist-dependent economy. One of the best ways to conserve our rural way of life is by permanent protection of open space through voluntary land conservation.

The Newfound Land Conservation Partnership was founded in 2009 to establish a local resource center to educate landowners and communities about conservation options and the intrinsic values and benefits of voluntary land conservation.



Photo © Susan C. Morse • www.keepingtrack.org

OUR PURPOSE

NLCP's mission is to facilitate the conservation of lands by working with landowners to:

- Protect water quality, wildlife habitat, intact ecosystems, forest resources, and agricultural lands.
- Help retain land holdings in family ownership to preserve working forests and farms.
- Promote opportunities for low-impact outdoor recreation.
- Preserve the inherent scenic qualities and character of the communities and the landscapes that make the Newfound region such a special place.
- Promote a balance between conservation and responsible development in the Newfound watershed while preserving the water quality, natural resources and scenic beauty.
- Preserve our rural character through land conservation, preservation of sustainable agriculture and forestry, and eco-tourism.
- Identify and prioritize areas for future voluntary conservation.
- Promote community involvement in land conservation and stewardship.

WHO ARE THE PARTNERS?

The NLCP is made up of three principal partners: The NLRA, whose *Land and Watershed Committee* serves as a local resource for landowners interested in learning more about conservation; the Lakes Region Conservation Trust (LRCT); and the Society for the Protection of NH Forests (Forest Society). The last two provide their expertise to carry out land conservation transactions, hold easements and fee simple interests. All three organizations have mission-driven interests in conserving land and water resource values in the Newfound region. Other land conservation organizations may be involved, too.

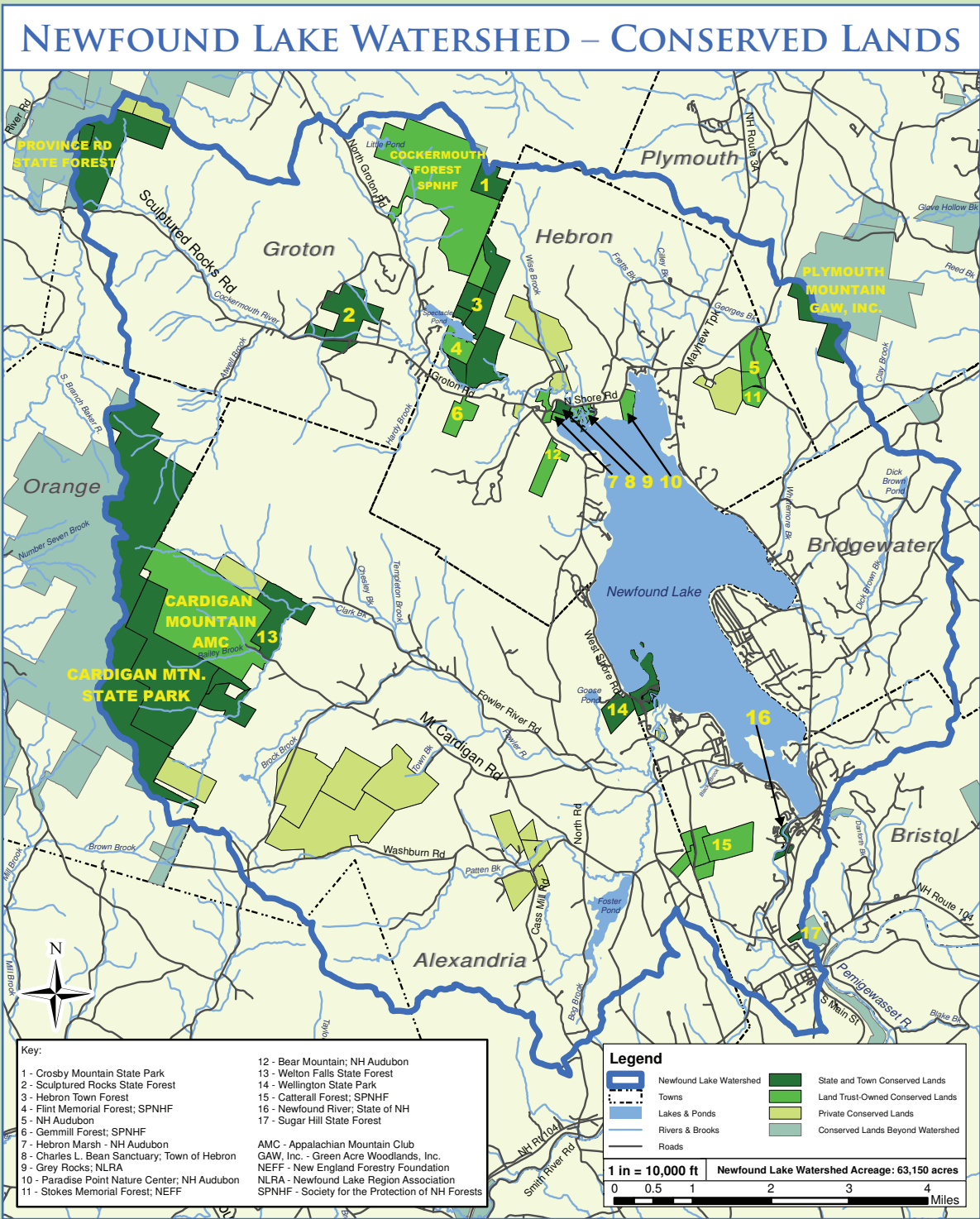
CONSERVATION PLANNING

Since water resources and wildlife habitats stretch beyond town boundaries, the Partnership takes a watershed-wide approach in protecting resources important to landowners and towns in the Newfound region.

CONSERVATION VALUES

Lands may be managed for multiple conservation benefits, including water quality protection, wildlife habitat, wetland protection, woodland management, agriculture, rare and endangered species, open space, recreational and educational opportunities.

"We love the fields and forests on this property and wanted to keep them open and undeveloped. Conserving the land has made it possible for us to keep and maintain this property and share the benefits of land ownership for farming, forestry, and recreation."
Paul and Mary Hazelton



WHAT ARE LANDOWNER OPTIONS?

There are many options available for conserving land. A few common options include:

- Conservation easements may allow the landowner to retain ownership of the property and see income tax, property, or estate tax benefits.
- Donation of land to a land trust can result in substantial income tax deductions and may be structured to allow the owner to live on the land or receive a life income.
- Bargain sale of land combines the income-producing benefit of sale with the tax-reducing benefit of tax deductions.

Call today for assistance in finding creative ways to achieve your goals.

HOW ARE LANDS EVALUATED?

We honor landowners' wishes and priorities in preserving their land. All conversations are candid, non-binding, and confidential. We explore the concepts of conservation restrictions, possible tax gains, community benefits, and donor recognition.

- Does the land protect water quality and supplies, aquifers, wells, recharge areas?
- Does the land protect wildlife, bird or plant habitat, rare or threatened species?
- Does the land contain important cultural, historic, or geological sites?
- Are there working agricultural or forest lands?
- Is the land adjacent to other protected lands?
- Does the land contain trails, scenic vistas, or historic landscapes?
- Are there opportunities for low-impact recreation?