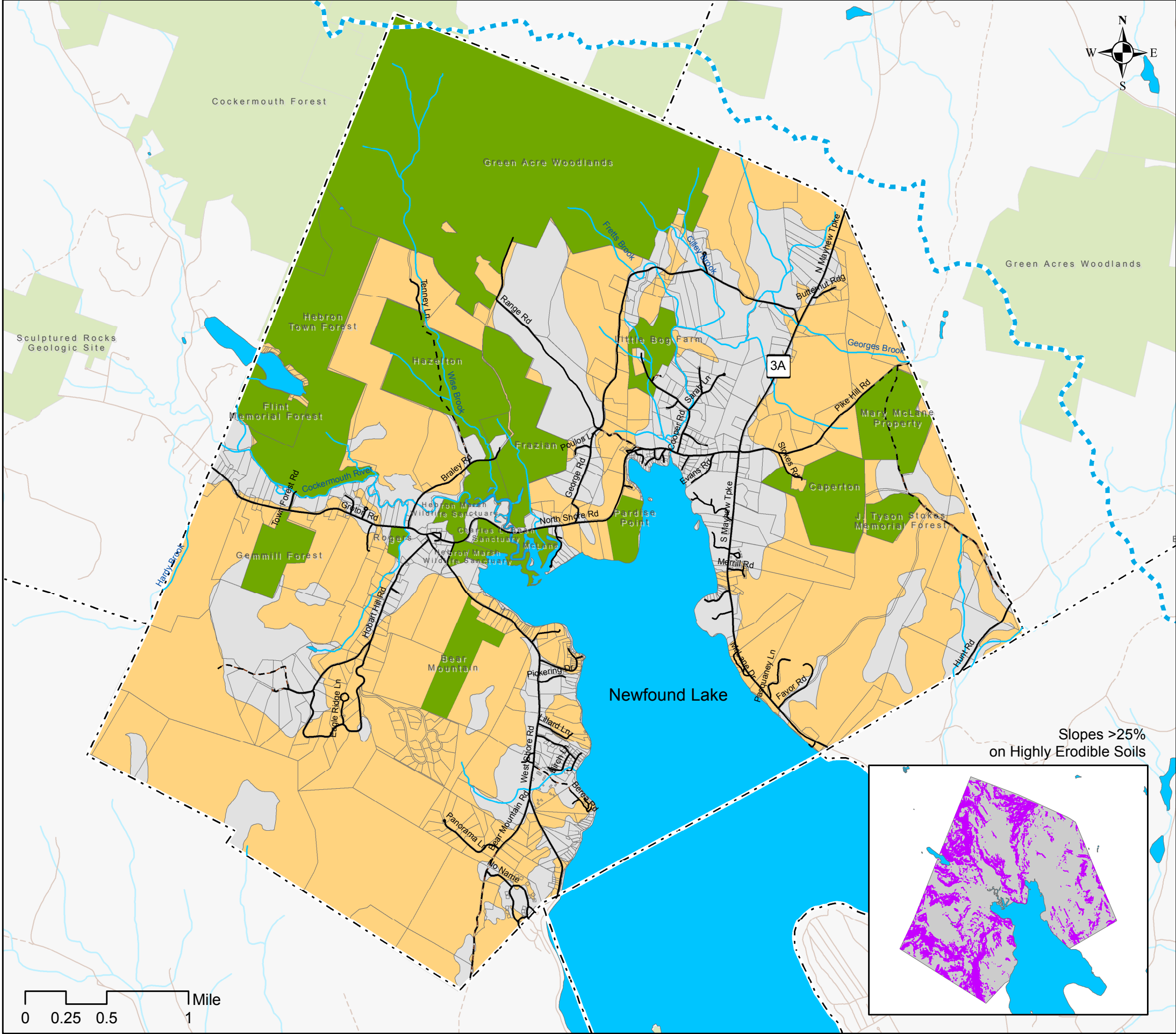


# Highly Erodible Soils



Town of Hebron, NH  
 Planning Board  
 Natural Resources Mapping



### Legend

- Newfound Lake Watershed
- Municipal Boundary
- Tax Parcels
- Road Network
- Class 6 Roads
- Streams
- Lakes & Ponds
- Conservation & Public Lands
- Highly Erodible Soils

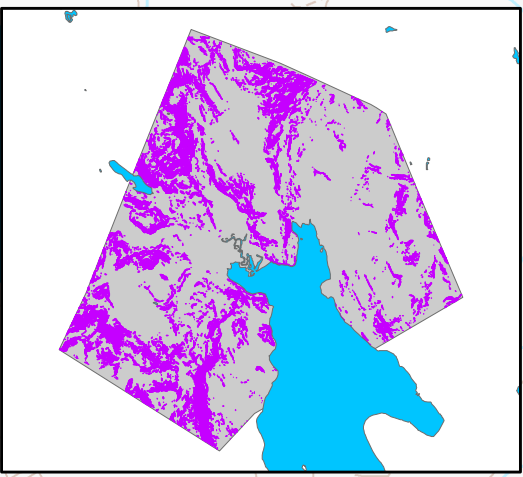
### Highly Erodible Soils

The NRCS soil survey for Grafton County classifies soils according to erosion risk with highly erodible soils of primary concern for community development. These soils exhibit particle sizes and soil structure that is prone to erosion by storm water run-off if disturbed.

About 8,000 acres or 70% of Hebron has highly erodible soils, found in large, contiguous areas in every portion of town. Note the close association of highly erodible soils and steep slopes 25% gradient in purple in the **inset map**. Nearly 1,600 acres, or 22% of all highly erodible soils in Hebron are found on slopes greater than 25%.

Since the erosive power of storm water increases significantly with steeper slopes, these areas are of particular concern when contemplating future land development. New roads are a special concern as drainage from roads traversing steep slopes is difficult to control; serious soil erosion is typical, and water quality in nearby streams and water bodies is adversely impacted.

Slopes >25%  
 on Highly Erodible Soils



A Project of the  
 Newfound Lake Region Association  
 with Funding Provided by NHDES



Funding for this project was provided in part by a Watershed Assistance Grant from the NH Department of Environmental Services with Clean Water Act Section 319 funds from the U.S. Environmental Protection Agency.

Mapping & Analysis by  
 GreenFire GIS

