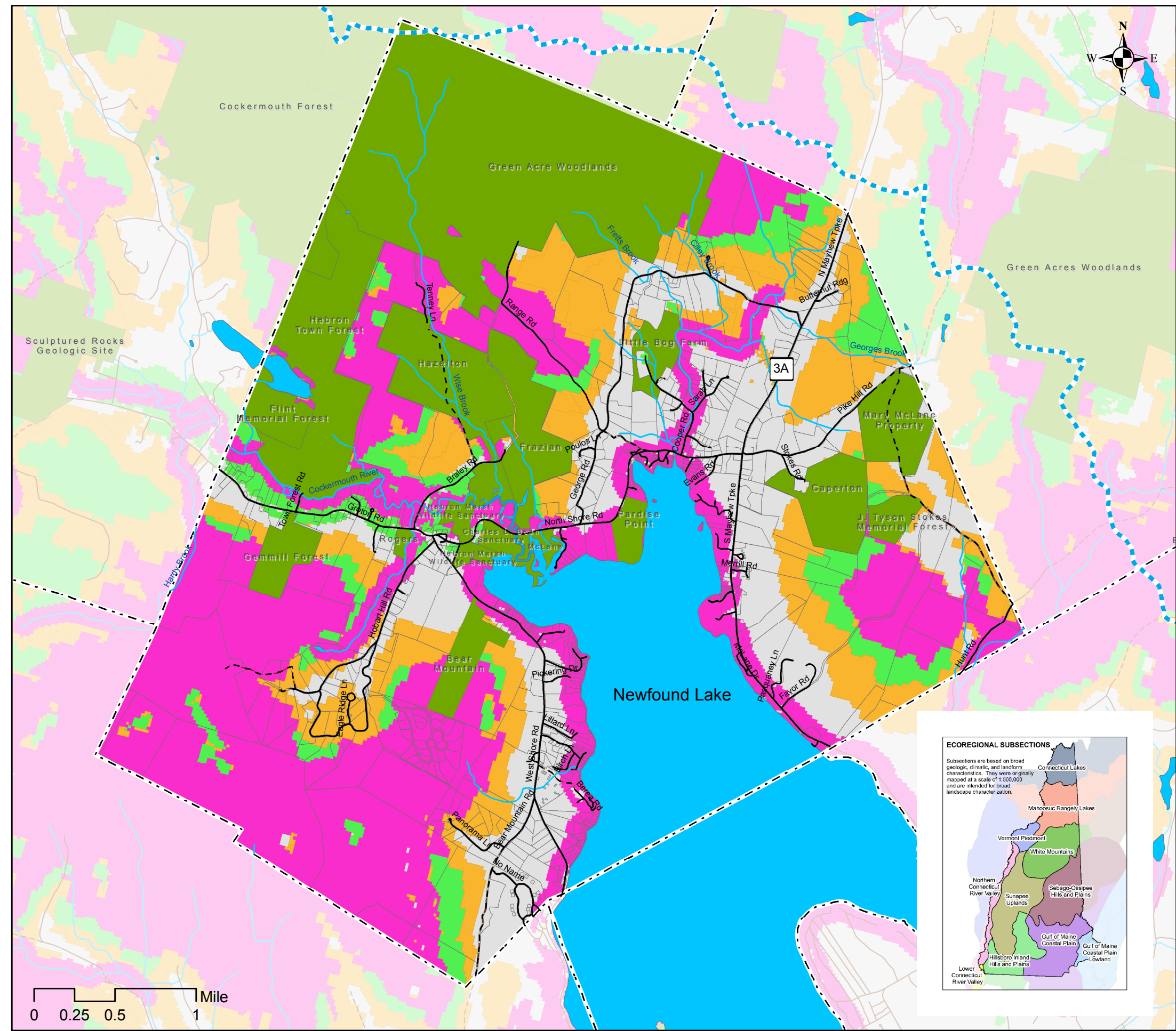


NHWAP Habitat Condition



Town of Hebron, NH
 Planning Board
 Natural Resources Mapping



Legend

- Newfound Lake Watershed
- Municipal Boundary
- Tax Parcels
- Road Network
- Class 6 Roads
- Streams
- Lakes & Ponds
- Conservation & Public Lands

NHWAP Habitat Condition Tiers

- 1 Highest Ranked Habitat in NH
- 2 Highest Ranked Habitat in Bio-Region
- 3 Supporting Landscapes

NHWAP Habitat Tiers

The NH Fish and Game Department's Wildlife Action Plan (NHWAP) has made an extensive and science-based analysis of the condition of wildlife habitat for the entire state. Based on a number of parameters and GIS modeling of physical habitat characteristics, three important tiers of information have been developed, as follows:

- Tier 1: Highest Ranked Habitat in New Hampshire
- Tier 2: Highest Ranked Habitat in the Biological Region
- Tier 3: Supporting Landscapes (buffers to protect the integrity of Tiers 1 and 2)

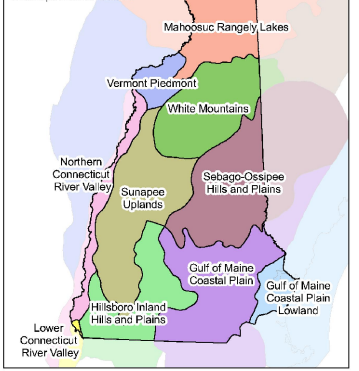
Hebron falls within the Sunapee Uplands biological region, which dominates west-central New Hampshire.

Conservation priority should be given to all three NHWAP tiers, but Tiers 1 and 2 are the most important to recognize in community planning. Hebron has large areas of both tiers which are currently both undeveloped and unprotected, especially in the southern half of the town. Smaller watercourses are also ranked highly due to water quality and habitat condition. More information on the NHWAP and habitat condition analysis can be found here:

<https://www.wildlife.state.nh.us/wildlife/wap.html>

ECOREGIONAL SUBSECTIONS

Subsections are based on broad geologic, climatic, and landform characteristics. They were originally mapped at a scale of 1:500,000 and are intended for broad landscape characterization.



A Project of the
 Newfound Lake Region Association
 with Funding Provided by NHDES



Funding for this project was provided in part by a Watershed Assistance Grant from the NH Department of Environmental Services with Clean Water Act Section 319 funds from the U.S. Environmental Protection Agency.

Mapping & Analysis by
 GreenFire GIS

