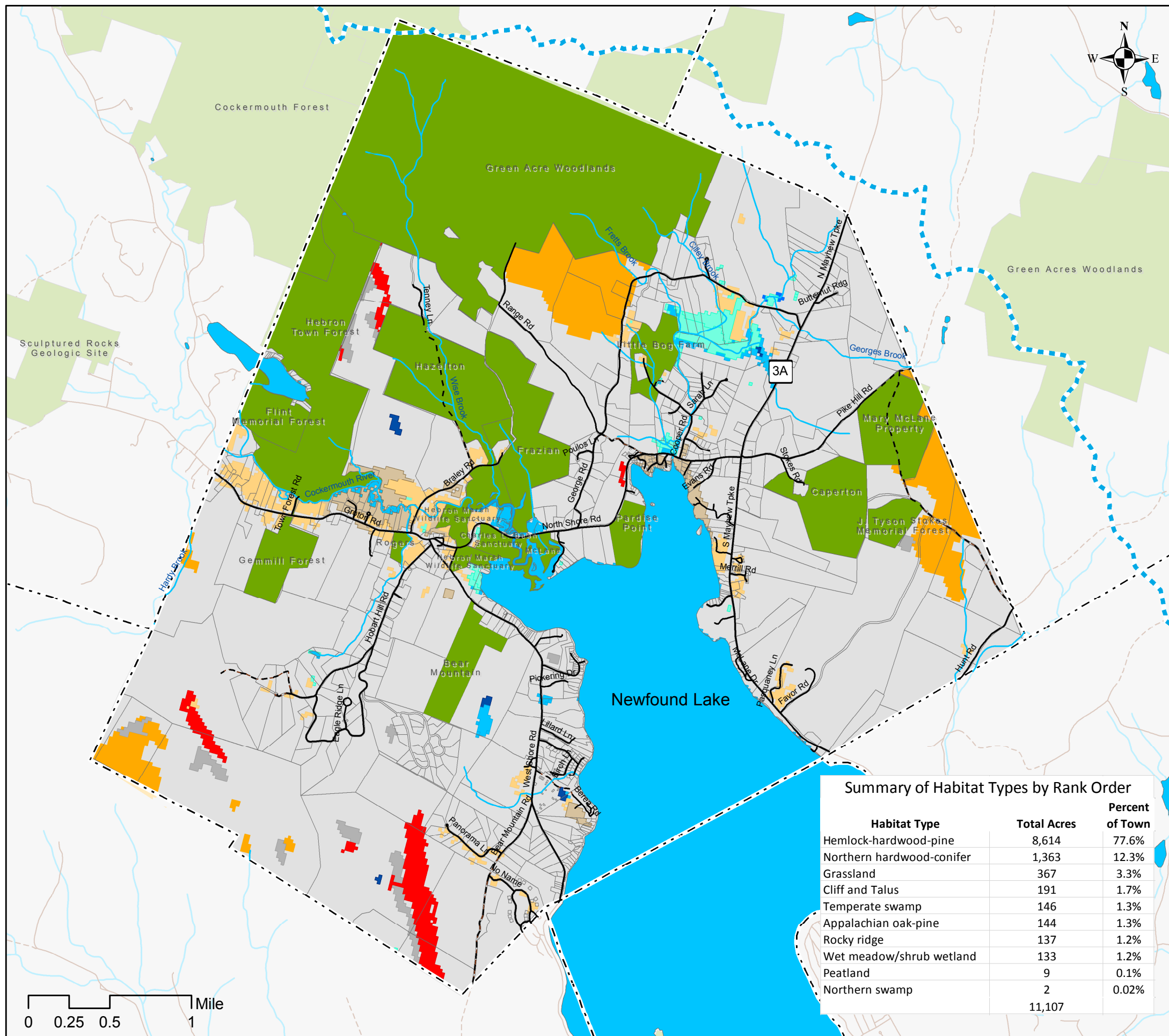


Uncommon Habitat Types



Town of Hebron, NH
 Planning Board
 Natural Resources Mapping



Legend

- Newfound Lake Watershed
- Municipal Boundary
- Tax Parcels
- Road Network
- Class 6 Roads
- Streams
- Lakes & Ponds
- Conservation & Public Lands

Uncommon Habitat Types

- Appalachian oak-pine
- Cliff and Talus slope
- Grassland
- Northern hardwood-conifer
- Northern swamp
- Peatland
- Rocky ridge
- Temperate swamp
- Marsh and shrub wetland

Uncommon Habitat Types

The NH Fish and Game Department's Wildlife Action Plan (NHWAP) has mapped numerous habitat types found in New Hampshire. Some of these are **matrix habitat** types that are quite common and form the background of prevailing habitat types that vary north to south and with elevation change in NH. Others are **patch habitats** that are typically smaller in extent and scattered in distribution.

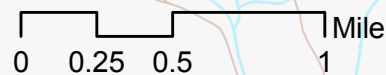
About 78% of terrestrial habitat types in Hebron fall into the matrix habitat category, this being Hemlock/Hardwood/Pine forest habitat. Patch habitats total about 22% of the town's land area, and include nine specific habitat types. See table below for uncommon habitat type names, acreages, and percent of town land area.

Northern Hardwood Conifer habitat involves about 12% of the town. Next in rank order are Grassland habitats occupying more than 3% of town land area and are most often associated with farmed hay fields and pasture, typically along the Cocker-mouth River. The balance of the uncommon patch habitats are relatively rare across New Hampshire.

All the patch habitats are small features and scattered widely across Hebron. Note that some larger parcels of land in the southern portion of town contain several occurrences of these small habitat types, each with its own special plant and animal ecology.

Summary of Habitat Types by Rank Order

Habitat Type	Total Acres	Percent of Town
Hemlock-hardwood-pine	8,614	77.6%
Northern hardwood-conifer	1,363	12.3%
Grassland	367	3.3%
Cliff and Talus	191	1.7%
Temperate swamp	146	1.3%
Appalachian oak-pine	144	1.3%
Rocky ridge	137	1.2%
Wet meadow/shrub wetland	133	1.2%
Peatland	9	0.1%
Northern swamp	2	0.02%
	11,107	



A Project of the
 Newfound Lake Region Association
 with Funding Provided by NHDES



Funding for this project was provided in part by a Watershed Assistance Grant from the NH Department of Environmental Services with Clean Water Act Section 319 funds from the U.S. Environmental Protection Agency.

Mapping & Analysis by
 GreenFire GIS

