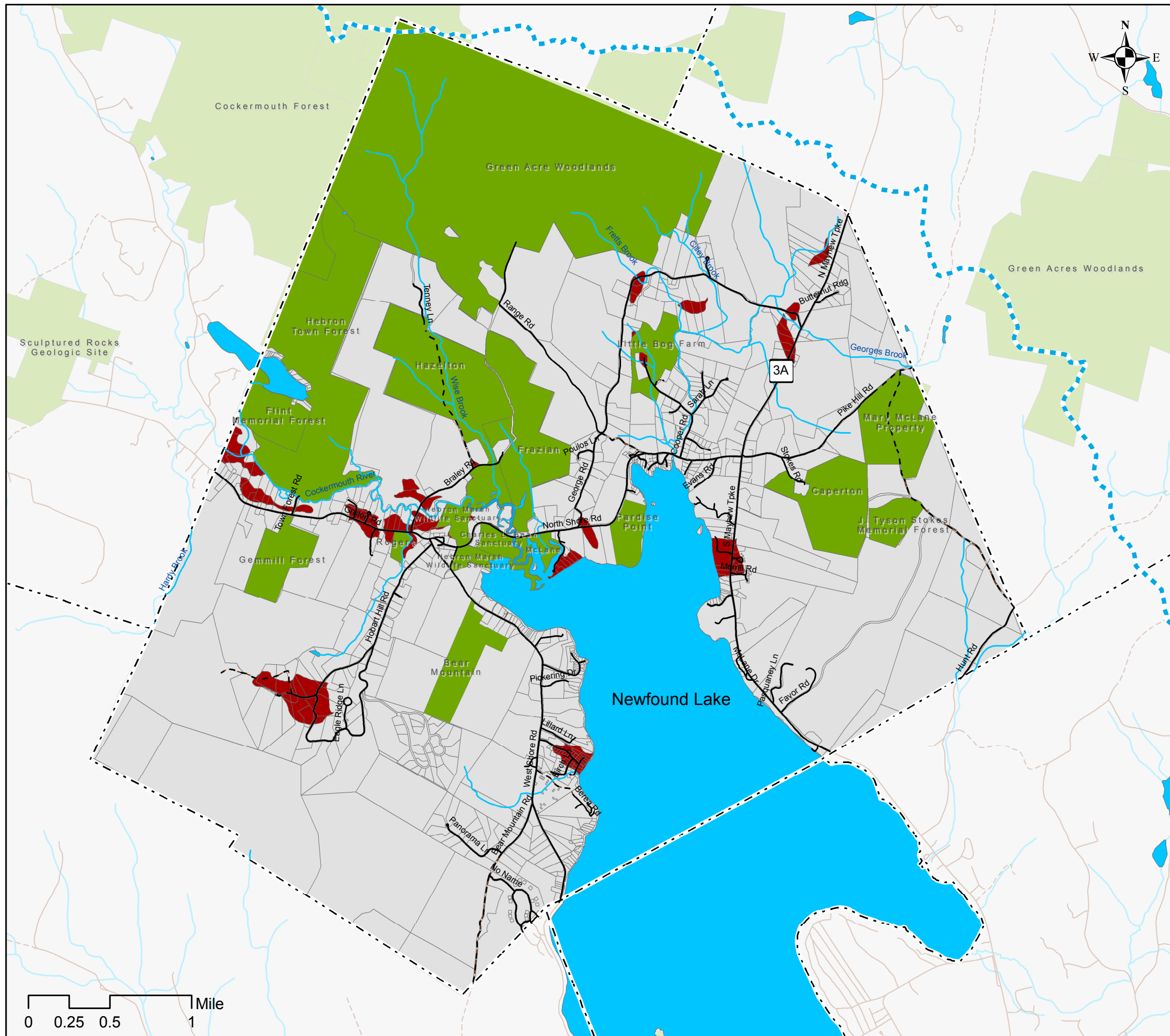


# Productive Farming Soils



Town of Hebron, NH  
 Planning Board  
 Natural Resources Mapping



### Legend

- Newfound Lake Watershed
- Municipal Boundary
- Tax Parcels
- Road Network
- Class 6 Roads
- Streams
- Lakes & Ponds
- Conservation & Public Lands

Prime Agricultural Soils

### Productive Farming Soils

Productive agricultural soils shown in this map include two NRCS soils classifications:

- Prime agricultural soils (best farming soils in NH); and,
- Soils of Statewide Importance

These soils are considered the most productive soils in NH for cropping, hay and forage production, and specialized vegetable and fruit production.

Hebron has only 305 acres of these soils, or about 3% of the total land area of the town, which is considerably higher than the state total of 6%. Only 22% of these soils are currently protected from development.

According to National Land Cover Data (2011), about 60% of the productive soils are now in forest cover, and another 13% are developed for non-agricultural land uses.

A Project of the  
 Newfound Lake Region Association  
 with Funding Provided by NHDES



Funding for this project was provided in part by a Watershed Assistance Grant from the NH Department of Environmental Services with Clean Water Act Section 319 funds from the U.S. Environmental Protection Agency.

Mapping & Analysis by  
 GreenFire GIS



Map Date: May, 2019