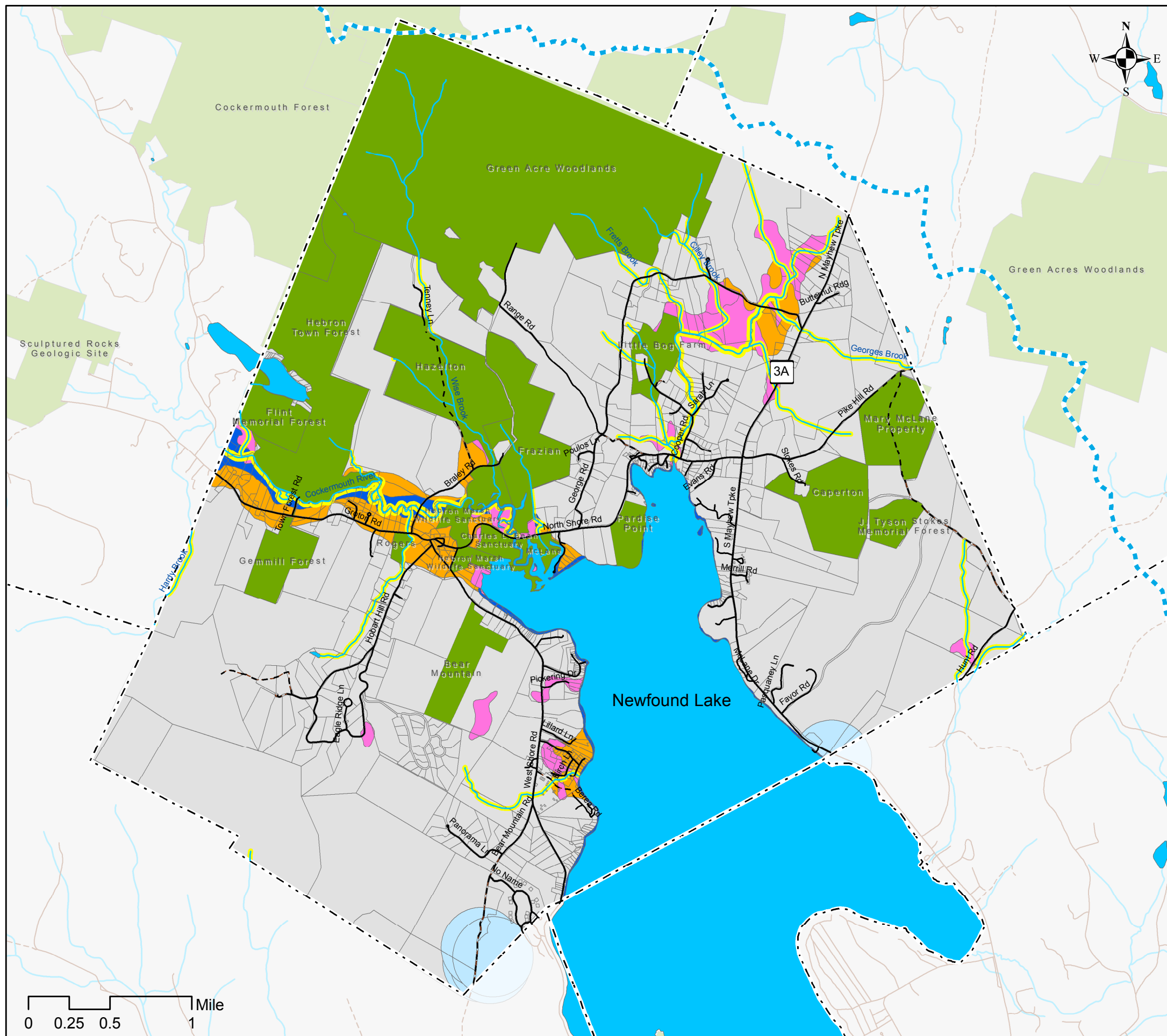


# Water Resources



## Town of Hebron, NH Planning Board Natural Resources Mapping



### Legend

- Newfound Lake Watershed
- Municipal Boundary
- Tax Parcels
- Road Network
- Class 6 Roads
- Streams
- Lakes & Ponds
- Conservation & Public Lands
- Riparian Corridors
- Hydric Soils (Wetlands)
- Floodplains
- Sand & Gravel Aquifers
- Wellhead Protection Areas

### Water Resources

Several water-related natural resource features are displayed on this map, including wetlands, floodplains, sand and gravel aquifer formations, and riparian/shoreland buffers. Wetlands are defined by NRCS hydric soils classifications of poorly and very poorly drained soils. Floodplains are taken from Federal flood insurance maps (DFIRM) and include both 100- and 500-year floodplain delineation. Sand and gravel aquifer formations are derived from USGS aquifer mapping and include all primary recharge areas regardless of potential for municipal water supply. There are two community well protection areas serving private developments along the southern border of Hebron.

Riparian and shoreland buffer zones use a stream order-based methodology developed by the Center for Watershed Protection. First and second order streams are typically found in headwaters areas, while lower-lying streams and rivers qualify as third and fourth order water courses. The lower sections of the Cockermouth River in Hebron is rated 4<sup>th</sup>-order. See the sketch below for dimensions used in buffers. Buffers are science-based to maintain and enhance water quality in streams and rivers by removing erosion sediment and nutrients. Shoreland buffers of 150' surround surface water bodies such as lakes, ponds, and reservoirs.

Water resource features typically are found in close association with one another, especially along streams and rivers

A Project of the  
Newfound Lake Region Association  
with Funding Provided by NHDES



Funding for this project was provided in part by a Watershed Assistance Grant from the NH Department of Environmental Services with Clean Water Act Section 319 funds from the U.S. Environmental Protection Agency.

Mapping & Analysis by  
GreenFire GIS



Map Date: May, 2019